



xCOMPARE

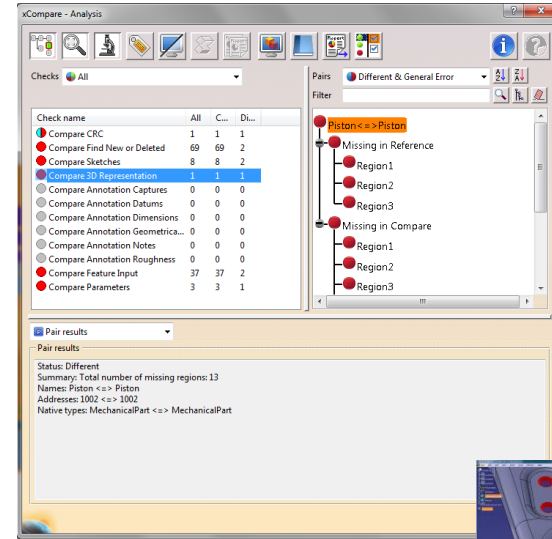
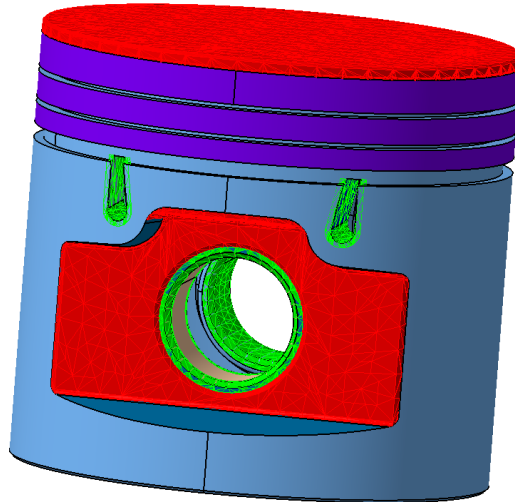
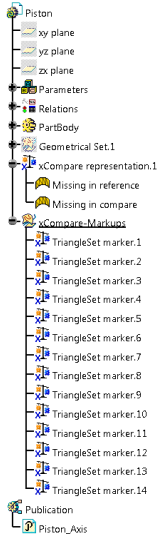
xCompare V5-V5 1.10.1

What's new



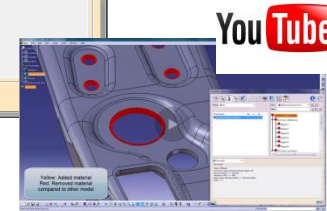
New Check: Compare 3D Representation

- This check clearly highlights shape differences within products and solid or surface models.



Watch the video!

<https://youtu.be/M0fbXLSQCOI>





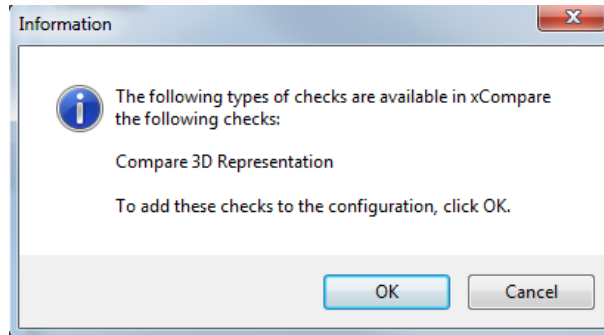
TRANSCAT



New Check: Compare 3D Representation

- How to implement:

- Add new check to existing xCompare configurations
- Edit configuration from main GUI 
- Press "update check template" in editor page 



- Press OK, check added to list



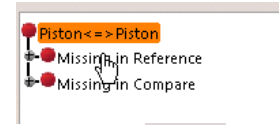
- Compare Centers of Gravity
- Compare Points
- Compare Sketches
- Compare Volumes
- Compare 3D Representation



Creating mark-ups of 3D Representation check

- Creating mark-ups

- Select entity pair in the analysis dialog



- Click on “Create permanent marking elements”



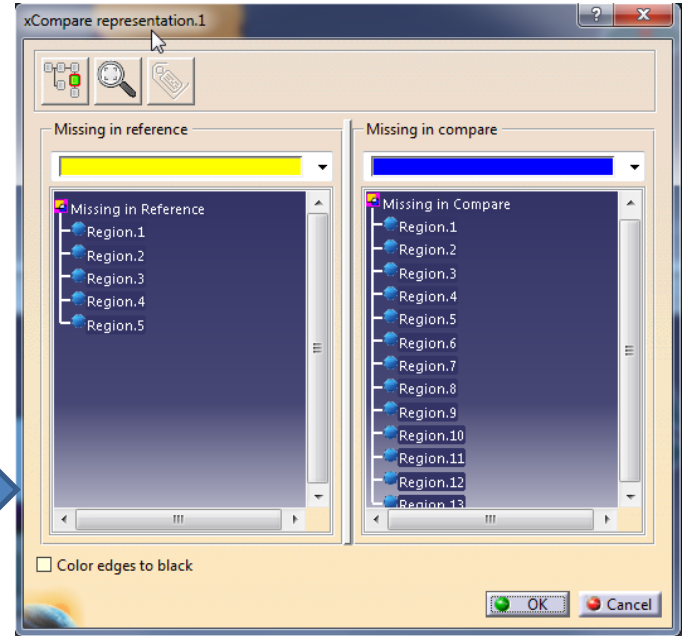
- The xCompare representation feature is created in the active document





Intelligent xCompare Representation feature


- Double click the feature to open the xCompare representation dialog
- Which shows the list of missing regions
- Flexibility to highlight , zoom and creating or measurable mark-ups for specific regions





Improvements / Fixes

- Handling improvements

- New toolbar icon  to isolate selected component when working in product context
- Drill-down: Deeper investigation of differences in product components with double-click on the component

- Bug fixing

- 4 bug fixes in version 1.10.1



XCOMPARE

**For more information, please contact us.
support@transcat-plm.com
+49 721 / 97 0 43 - 100**