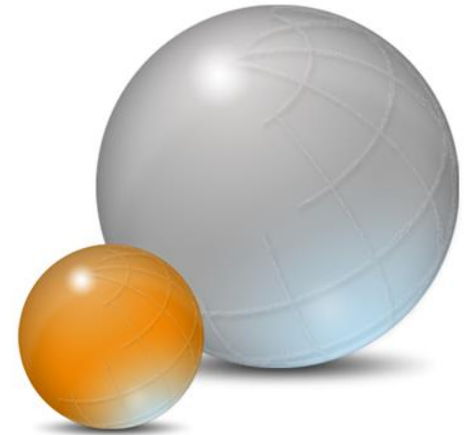




# Q-Checker 2.1.0 for CATIA V6

## What's new



**TRANSCAT**



# Overview

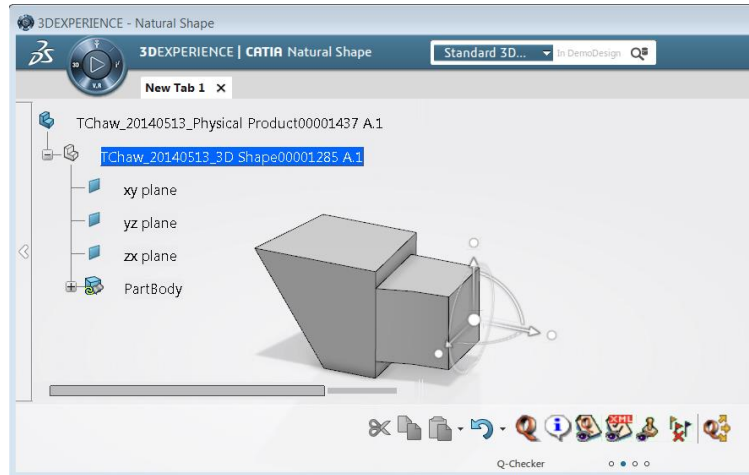
- This “**What’s new**” describes some major changes:
  - General
  - Improvements
  - New Criteria



# General

- **General enhancement:**

- From 2014x, Q-Checker is accessible from the Action Bar. Q-Checker is available in those workbenches where you can edit Products, 3D Shapes and Drawings.





# General

- **Migration Guide** added to the documentation
  - Please read it before you upgrade from Q-Checker 1 to Release 2
  - Please check your profile after the import
    - Some criteria require special attention - see chapter 4.8
- **Environment variables** have been renamed
  - Q-Checker environment variables start with "TCAQC\_" instead of "QC"



# General

- **General enhancements:**
  - Only DSLS license is activ.
  - No support of the check seal by “Document Description” any more.
  - The modeltype detection has been extended.
- **For more details please refer to the file readme.txt of the Q-Checker 2.1.0 installation**



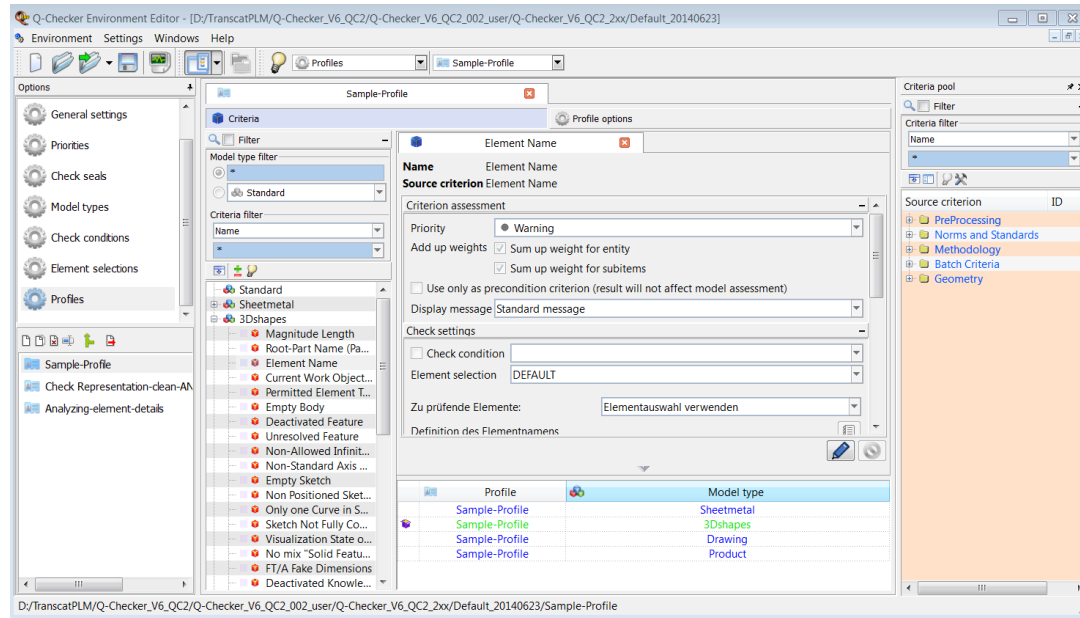
# Improvements

- New Environment Editor (1)
  - Offers much easier and faster administration of environments. Main features:
    - Filter to search for criteria and model types
    - Add Criteria via drag and drop to profile / model type
    - Create “Clones” via Copy – Paste
      - The separate application to clone and rename criteria is not needed any more
    - The processing order of the criteria is defined by their order in the profile tree
      - It replaces the “Processing Groups” and exceeds their possibilities by far
    - One editor for all environment settings – including model types, priorities, GUI settings
    - Stand alone application - can stay open while working in CATIA
    - One file “qchecker.qcenv” for all settings



# Improvements

## New Environment Editor (2)





# Improvements

- The scanning of big models has been improved
  - Time to read a big amount of elements has been reduced
- More than one directory can be set for “TCAQC\_ADMIN”
  - Profiles from different locations can be used
- Option to delete “Internal Reports” added to “Profile Options” dialog
  - Useful for example if models should be imported/exported





# Improvements

- Option to delete “Internal Check Seals” added to “Check Seals” dialog
- New CATIA environment keyword “TCAQC\_SEAL\_VAL”
  - It controls in which mode (`INTERACTIVE`, `INTERACTIVE_BATCH`, `COMMAND_LINE_BATCH`) the check seal validation is performed and what should be done in case the seal is not valid (`RECHECK`, `INTERRUPT`)
- New keyword for batch “\*IGNORE\_CHECKSEAL\_VALIDATION”
  - Useful to force the creation of new Check Seals in batch



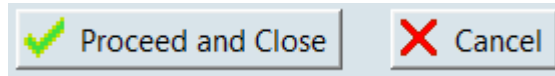
# Improvements

- Option to allow other profiles added to the “Check Seals” dialog
  - To allow older profiles – for example the last profile for QC 1.12.1
- New CATIA environment keyword “TCAQC\_DB\_CONNECT”
  - It controls in which mode the report for Q-Monitor is written and booked to DB
  - It replaces the QCHECKER.par keywords TCAQC\_DB\_CONNECT\_...
- New keyword for the batch xx.in file “\*DISABLE\_DB\_CONNECT”
  - It replaces the keyword \*DB\_CONNECT\_BATCH



# Improvements

- **“Cancel”** button added to “Analysis” and “Checked Models” window
  - It adds the possibility to close that windows without creating any reports and check seals – which saves time



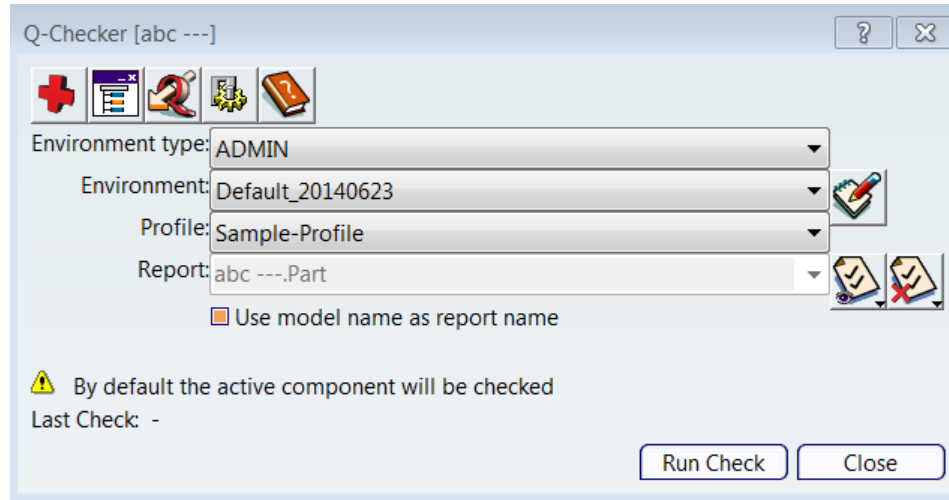
Close the window.  
Create reports and check seals

Close the window.  
Do **not** create reports and check seals



# Improvements

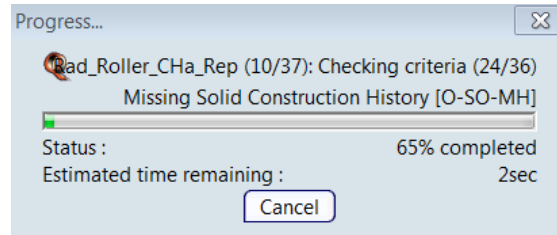
- New option “Environment type” in start window
- To select the environment type: ADMIN (company-specific) /USR (user-defined)





# Improvements

- “Criteria counter” added to progress bar
  - The information criterion (x of y) is currently in work is useful to show the progress – especially for big models

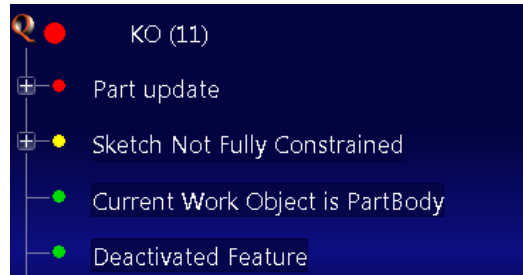


The 24<sup>th</sup> of 36 criteria is currently in work



# Improvements

- Colored dot for model assessment
  - It shows at first sight the over all status of the checked model



Like a traffic light the dot in front of the model assessment shows the over all status of the model



# Improvements

- The “Checked Models” window shows which model is in work
- The information model #x is currently in work is useful to show the progress

#	Assessment	Healed	Critical Hea...	Violat...	Part Number	Check M...	Status
1	Errors (1)	No	No	3	Kipphebel_CH...	Checked	0
2	IO (0)	No	No	2	Bolzen_Roller...	Checked	0
3	IO (0)	No	No	3	Zylinderschrau...	Checked	0
4	IO (0)	No	No	2	Gleitring_CHa...	Checked	0
5	IO (0)	No	No	3	Zylinderschrau...	Checked	0
6	Errors (2)	No	No	3	Drehkreuz_CH...	Checked	0
7	IO (0)	No	No	2	MutterM8_CHa...	Checked	0
8		No	No	0	Lenker_CHa_R...	Not C...	
9		No	No	0	Kappe_CHa_R...	Not C...	
10		No	No	0	Rad_Roller_CH...	Not C...	
11		No	No	0	Radhalter_CHa...	Not C...	
12		No	No	0	Stange_CHa_R...	Not C...	
13		No	No	0	Drehteller_CH...	Not C...	
14		No	No	0	Schutzblech_C...	Not C...	
15		No	No	0	Trittbrett_CHa...	Not C...	
16		No	No	0	MutterM6_CHa...	Not C...	
17		No	No	0	Bolzen_Roller...	Not C...	
18		No	No	0	MutterM8_CHa...	Not C...	
19		No	No	0	Zylinderschrau...	Not C...	
20		No	No	0	Zylinderschrau...	Not C...	
21		No	No	0	Gleitring_CHa...	Not C...	
22		No	No	0	Zylinderschrau...	Not C...	
23		No	No	0	Zylinderschrau...	Not C...	

The “Checked Models” window show that currently model #8 is checked



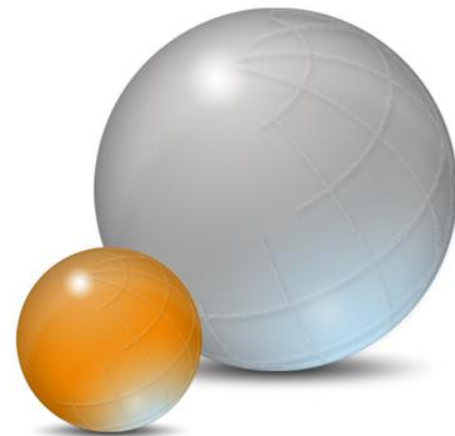
# New Criteria

- New criteria:
  - “Surfacic Flange Definition”
  - “Material Thickness Vector Corresponds to Thick Surface Orientation”
  - “Parameter Properties”
  - “View Dress-up Properties”
  - “View Generation Mode Options”
- For more details, please refer to the documentation “Criteria Manual”





**For more information, please contact us.  
support@transcat-plm.com  
+49 721 / 97 0 43 - 35**



***TRANSCAT***