

TRANSCAT



myPLM
from version 1.3.8

PLM Application Starter Tool for
Windows, AIX, HP-UX, IRIX and Solaris

MANUAL

***my*PLM**

Conventions in this manual

For better orientation in the manual the following symbols are used:

Warning symbol



The warning symbol signals critical moments to which you should pay attention in order to avoid problems in your work process.

Tip symbol



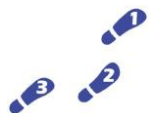
The lamp symbol signals a *tip* that offers you practical experience to make your work easier.

Info symbol



The info symbol signals background *information*.

Step symbol



The step symbol signals that a *sequence of work operations* is given.

Transcat PLM on the internet
myPLM product support

<http://www.transcat-plm.com/>

Phone: +49 721 970 4335
E-Mail: support@transcat-plm.com

© TRANSCAT PLM GmbH 2015

Table of Contents

1.	System Requirements	5
2.	Application overview	6
3.	Main Principle	7
4.	User Information	9
5.	Command to Start myPLM	12
6.	Assembled Environment File	15
6.1	Contents	15
6.2	Assembling Process	17
7.	XML File Structure	19
7.1	Node: <Environments>—Definition of Environment Tree Nodes	20
	• Subnode: <Environment>— Definition of Environments, Access, Startable Script, Parameter	24
	• Subnode: <Setvar>— Set the specified internal variable at runtime	27
	• Subnode: <Setenvar>— Set the specified internal environment variable at runtime.....	27
	• Subnode: <Language>— Set the specified internal variable at runtime	27
	• Subnode: <Link>— Reference to a branch from Links section.....	28
	• Subnode: <Include>— Reference to a exported part of the XML file	30
7.2	Node: <Links>— Definition of multiple usage branches in Environment nodes	31
	• Subnode: <Link>.....	31
7.3	Node: <GlobalRadios>—Buttons to Define Settings for License Configuration ...	32
	• Subnode: <GlobalRadio>.....	32
7.4	Node: <Groups>—Definition of Access Conditions	34
	• Subnode: <Group>	34
7.5	Node: <Variables>—Definition of Order, Type and Default of Variables.....	35
	• Subnode: <Variable>	35
7.6	Node: <Tools>—Definition of Tools (Executables) in the Menu	36
	• Subnode: <Tool>.....	36
	• <ToolSubMenu> subnode.....	37
7.7	Node: <Options>—Definition of Additional Options, Accessible from Menu Bar	38

TABLE OF CONTENTS

	• Subnode: <Option>.....	38
7.8	Node: <GUITexts>—Definition of text and titles displayed in the user interface	40
	• Subnodes: (all are not required and value type is string)	40
7.9	Node: <Include>—Reference to a exported part of the XML file	43
8.	News Ticker File Structure	44
9.	Multi-Language Support	46
10.	CSIDL Utility for WINDOWS.....	48
11.	Internal Variables.....	49

* * *

1. System Requirements

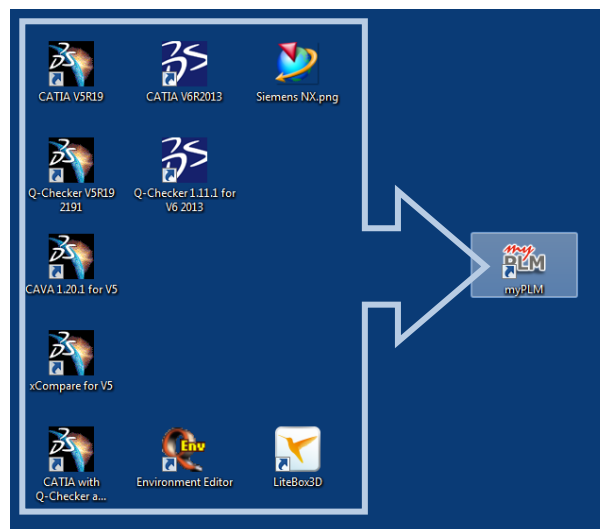
Supported operating systems: Microsoft Windows, AIX, HP-UX, IRIX, and Solaris
Java Runtime Environment 1.5 or later is required.

2. Application overview

myPLM is a tool for starting applications in various configurations. You can choose from the available configurations in the clearly structured myPLM window and start the required software.

As an **administrator**, you can use myPLM to organize a multitude of applications, add-ons, and license preferences in a central location. You can define configurations specific to projects and user roles in a modular fashion, and make them readily easily available to all myPLM users. All application and user settings are stored centrally in an XML file. At multi-site companies, the hierarchical structure allows for both central and distributed administration.

myPLM is the evolution of myV5. It is tailored to work with CATIA V5, CATIA V6, Siemens NX and other PLM and CAD applications. myPLM works equally on Windows and major UNIX systems. NX environments for suppliers of Daimler and GM can be integrated on the same principle as CATIA V5 environments.



3. Main Principle

There are different ways to customize CATIA V5 for different application cases (e. g. text and dimension standards, license configurations or additional DLL files for specific software tools). Mostly the customization is made by defining an individual environment file for each application case. An environment is a set of system variables (which in our case is used by CATIA).

```
!-----
!   DASSAULT SYSTEMES - V5 ENVIRONMENT FILE
!-----
! MODE : Global
! TYPE : Interactif
!-----
CATInstallPath=i:\B12\intel_a
CATDLLPath=i:\B12\intel_a\code\bin
CATReferenceSettingPath=
CATUserSettingPath=i:\B12\CATSettings
```

The settings are individual attributes for different modules; they are defined by search paths. The variables for CATIA are `CATReferenceSettingPath` and `CATUserSettingPath`.

The variable `CATReferenceSettingPath` is used for administrative settings, the variable `CATUserSettingPath` is used for individual settings.

Each environment file points to its own set of CATIA settings, dll files and other resources or values.

To start CATIA, this environment file must be indicated as a set of parameters:

```
-env      name of environment (without .txt extension)
-direnv   directory of environment file.
```

myPLM can start any executable application on your computer if it is defined in the myPLM XML file. myPLM has been conceived especially for CATIA V5 as a mechanism to assemble several individual environment files into one unique environment file. This operation is repeated as a result of each myPLM start procedure. This conceptual design guarantees that modifications on the individual environments, effected in the meantime, will be taken in account for every program start executed by means of myPLM.

The administrator can define:

- the extent of the applications that can be started by the user, and
- how these applications are displayed on the user interface: in complex tree structure or simple list.
- For each entry (tree node) one or more environment files and one or more setting directories can be defined.

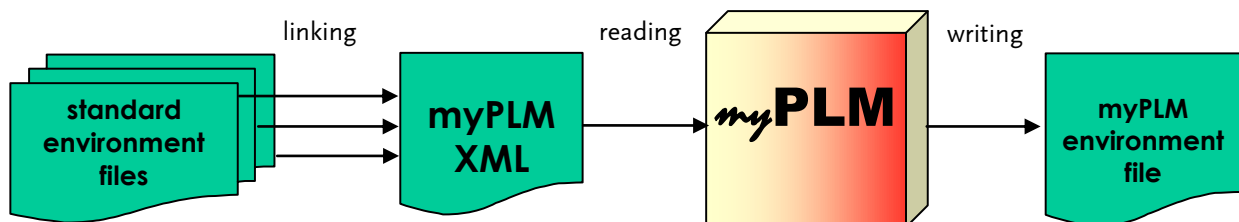


Explanation:

An environment file is a collection of system variables.

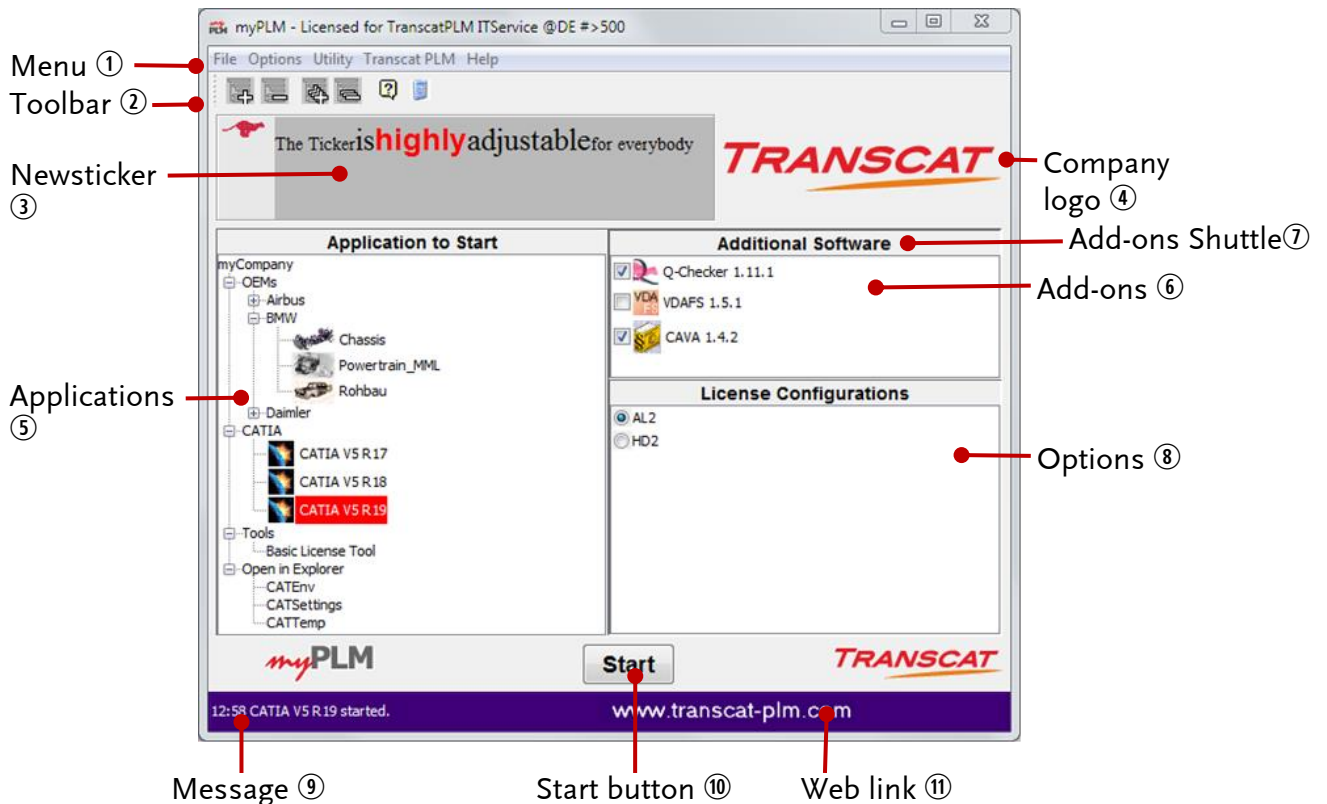
myPLM can use special customized environment files, but also standard environment files (e. g. created by CATIA or by add-on software). All defined environment files and setting directories in a tree path (i.e. the way from the root node to the selected node) are collected, double entries are removed and a new environment file is created.

It is possible to control the order of collection, especially for paths, using the *sort* attribute with the value *top* (from root node to bottom node) or *bot* (from bottom node to root node).



4. User Information

• The myPLM window



① Menu bar

- File > Exit Exit myPLM
- Options > customer defined entries Options activated for start by tree node
- Options > Metal | CDF Motif | Windows User interface style of the myPLM window
The number of items in this menu depends on the JAVA installation.
- Tools Start customer defined utilities
- Help > Help topics Displays the manual
- Help > About myPLM version information

② Tool bar



Expand selected button

Clicking this button expands the subnodes for a highlighted tree node (only if under this node subnodes are available).

***Collapse selected*** button

Clicking this button implodes the subnodes for a highlighted tree node (only if under this node subnodes are available).

***Expand all*** button

Clicking this button expands the tree completely.

***Collapse all*** button

Clicking this button implodes the tree completely.



Help Reference button

Clicking this button opens the myPLM PDF help manual (this manual).

**(Example) application** button

Depending on the administrator's configuration you can find here (or not) buttons to start user-specific applications (the same applications as in the Tools menu.)

③ Optional news ticker

Depending on the administrator settings, here a news ticker with administrator messages may be displayed. Text scrolling can be paused by the user with mouse click; a new click will restart scrolling.

④ Company logo

Initially, the Transcat PLM logo is displayed (myPLM_Logo.png from the admin xml directory). The administrator can replace this image.

⑤ Applications

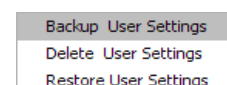
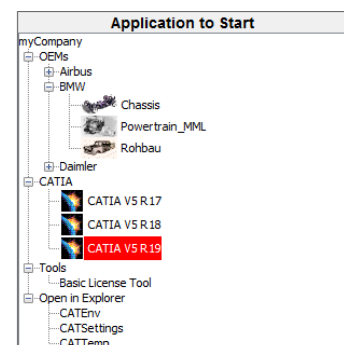
In this box, the user can find the applications that the administrator has defined accessible for the respective user.

The aspect of this box can be, depending on the administrators settings, a tree structure (every node having one or more environment files) *or* simple list.

The user can select one of these applications that he wants to start.

(Some of the nodes/ applications can be defined by the administrator as not startable.)

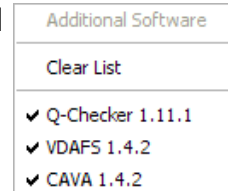
On right click on a tree node, a popup menu with the user settings management appears. User settings from the last entry in the CATUserSettingPath on the selected node can be backed up, restored or deleted.



⑥ Add-ons

Depending on the application selected in the left box, in this box, the names of add-ons may be displayed. The user can select one or several add-ons that he wants to start together with the selected application (e. g. Q-CHECKER together with CATIA or Q-CHECKER together with CATIA and VDAFS PROCESSOR).

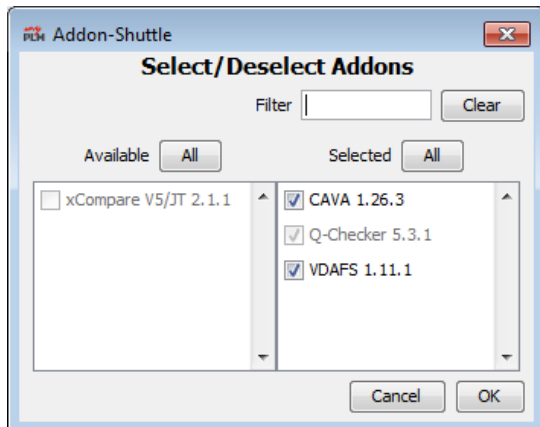
Right mouse click shows the add-on summary popup with all selected items. By left click, an item is set unselected. There is also a 'Clear List' menu item.

**NOTE**

Do not select several versions of the same add-on (e. g. do not select Q-CHECKER version V 1.5.6 and version 1.9.2). Select only different add-ons.

⑦ Add-ons Shuttle

On doubleclick in add-ons title bar the add-ons shuttle is displayed:



Dialog for selecting add-ons with two sorted lists (shuttle): available – selected

with live filter (clear) and (de-)select all buttons.

⑧ Optional license configuration

With the radio buttons of this box license configurations can be selected.

⑨ Message

Displays a dynamic message from administrator or a return message from a executed software

⑩ Start button

When the required applications are selected, press this button to start the applications. If the button is colored gray, the selected item can not be started.

⑪ Web link

Link to the TRANSCAT PLM website

5. Command to Start myPLM

Syntax:

```
<java> [ -Dhostname=<host>][ -Dusername=<name>][ -Denv=<envname>][ -Ddirenv=<envdir>]
[ -Dshowref=<refcall>][ -Dshowtut=<tutcall>][ -Dbrowser=<browsercall>]
[-Dcompany=<name>][ -Dvar1=<val1>] ... [ -Dvarn=<valn>] -classpath <rtmyPLM.jar>
myPLM.user.MyPLM[ -d][ -s][ -b][ -e][ -c][ -v <listfile>][-l <licfile>] <xmlfile>[
arg1]
[ arg2]....[ argn]
```

Parameter	Description	Example(s)
		Default
<java>	Call for Java interpreter	java, javaw
<host>	Optional hostname for node access Leading '~' will set value to lowercase. '~' will be removed.	%COMPUTERNAME%, 'hostname' "unknown"
<name>	Optional username for node access Leading '~' will set value to lowercase. '~' will be removed.	%USERNAME%, 'logname' "unknown"
<envname>	Name of resulting environment without extension (overwritten by 'Environments' node 'envname' attribute in the XML file; surrounding " will be eliminated)	/tmp/myEnv default
<envdir>	Path to resulting environment (overwritten by 'Environments' node 'direnv' attribute in the XML file; surrounding " will be removed)	"%HOMEDRIVE%%HOMEPATH%" . (<i>point</i>)
<showref>	Command to open the reference manual	"C:\Adobe\AcroRd32.exe" myPLM_1.3_reference.pdf "cmd /c start <xmlpath>\ myPLM_1.3_reference.pdf"
<showtut>	Command to open the tutorial	"C:\Adobe\AcroRd32.exe" myPLM_1.3_tutorial.pdf "cmd /c start <xmlpath>\ myPLM_1.1_tutorial.pdf"
<browser>	Command to open TRANSCAT PLM homepage	"C:\Firefox\firefox.exe www.transcat-plm.com" Netscape and IExplorer: www.transcat-plm.com

Parameter	Description	Example(s)
		Default
<company>	Text, displayed in the title of the window	"myCompany"
		"myPLM - Transcat PLM"
<varx>	Variable to be replaced when found in: <ul style="list-style-type: none"> • lines of resulting env file, • script string 	string
<myPLM.x.jar> ???	???Path to myPLM.jar (opt. to rt.jar) ???multixml	
<xmlfile>	Admin XML file or folder, containing one or more XML files. Files must be full admin.xml files. All <Transcat> subnodes are merged on this hierarchical stage.	default.xml
-d	Debug mode for test-output to console	
-s	No splash screen	
-b	Batch mode. Environment file needed	
-e	Execute not. Nothing is executed, if Start-Button is pressed, only environment file is written.	
-c	CSIDL_* variables are treated to be internal myPLM variables: [CSIDL_*]	
-v <listfile>	Read myPLM variables from file/url. Same function as -Dvar=val.	
-l <licfile>	Specify name and location of lic file	
-x <prev.sel.>	Select the specified application and options by default in the myPLM window. In batch mode (-b), the specified application and add-ons are started automatically. If the tree path contains blanks, it must be enclosed in double quotes. If parameter -x is not set, application and options are read from the most recent environment file.	"CATIA/CATIA V5 R19+Q-Checker+CAVA*HD2 "
arg1 ... argn	All arguments are stored to be forwarded	

Parameter	Description	Example(s)
		Default

To submit more environment variables to myPLM (for text replace e.g. path trailer as `c:\...`), an additional `-Dvariable= value` has to be added. Left and right square brackets [and] will be used to replace these texts.

Example:

`-Dpathfront=C:\Programme` combined with path specification of `CATDLLPath=[pathfront]\B12\intel_a\code\bin` in the environment file results in the statement:

```
CATDLLPath= C:\Programme\B12\intel_a\code\bin.
```

After starting the myPLM software, (if the console window is opened) the messages "starting myPLM ..." and later "ending myPLM" will be displayed. Then myPLM will be started and the following operations will be initiated:

- The specified XML file is read.
- From the xml directory the myPLM Logo image file (myPLM_Logo.png) is loaded.
- LookAndFeel is set to SystemLookAndFeel or on the value which is set in the XML file. The possible values are "Windows", "CDE/Motif" or "Metal". Custom look-and-feels can be used.
- The previous assembled environment file is read in, and the tree and the nodes are displayed in the myPLM window as they were selected in the last session.
- The icons for tree node, add-ons and radios are read in.

In batch mode, the splash screen and user interface will be suppressed, the start command will be submitted automatically. For more information see section 6. *Assembled Environment File* on page 15.



Note:

`classpath` is used as parameter or variable and defines a search path for JAVA classes (*.class).

Classes are also found in zip or jar archives. The routes to all needed class files are to be defined in the class path.

6. Assembled Environment File

6.1 Contents

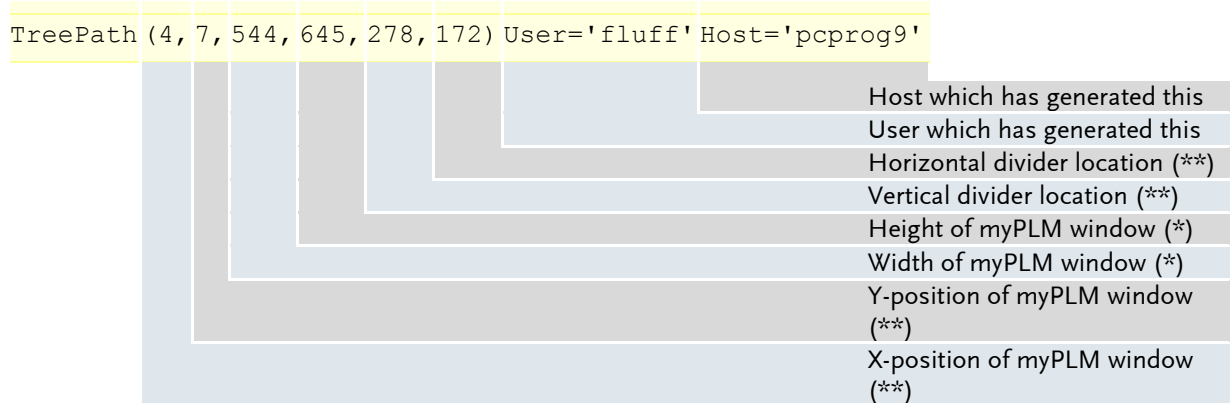
Example of header of the assembled environment file:

```
!-----
!   DASSAULT SYSTEMES - V5 ENVIRONMENT FILE
!   written by TransCAT myPLM application
!-----
! MODE : Global
! TYPE : Interactif
!-----
! TreePath(4,7,544,645,278,172) User='fluff' Host='pcprog9'
!   - TransCAT
!   - Test Environment
!   - Test3344
!...+ Addon
!   * CCDD
!-----
```

Explications:

```
! MODE : Global
! TYPE : Interactif
! ...
```

All lines in this section from the first environment file to read (top node) are taken over, because CATIA v5 needs in some cases this information.



Notes:

(*) If specified height value is greater than real screen size, height will be limited to real screen size.

(**) - 1 = center

- TransCAT	} Tree path to the selected node (designated by the – sign)
- Test Environment	
- Test3344	
+ Addon	Selected add-on—if activated in Environments node
* CCDD	Selected radio button (designated by the * sign)

Internal variables in the copied CATIA environment header are replaced by their respective values.

If no environment file header is available, the following default header is used:

```
!-----
!  DASSAULT SYSTEMES  -  V5 ENVIRONMENT FILE
!  written by Transcat PLM myPLM application
!-----
! MODE : Global
! TYPE : CATIA
! TMSTMP : 1241701148
! ARGS : -cs CATIA -a global -icon no -menu yes -tools
!-----
```



TIP:

The assembled environment file is to be used as input file for the batch mode.

To select add-ons instead of the – sign the + sign must be used.

Pay attention to the syntax for the node definition:

Every line must comprise the starting ! sign, followed by three blanks, one qualifier sign (+, – or *) and another blank, after which the node name follows.

6.2 Assembling Process

After pressing the start button, the following operations will be executed:

- Collecting data from nodes (from root node to selected node) and then checking add-ons information (from top to bot) in lists
 - environment file(s)
 - command string
 - envpar string
 - cmdpar string
 - close string
 - additional settings directories
- Look for Setvar to be set at current environment node
- Look for Setenvvar to be set at current environment node
- Look for Setvar to be set at current add-on node
- Look for Setenvvar to be set at current add-on node
- Adding selected radio-button settings-path to additional settings directories
- Look for Setvar to be set at current radio-node
- Read and parse the related environment files (env="...")
- Read and parse the related last environment files (lastenv="..."). The values from these files are added as the last values of the respective environment variables.
- Testing myPLM license
- Writing environment file and execute for each variable the following operations:
 - Remove double entries at paths:
 - from bot to top (first appearance removed)
 - from top to bot (second appearance removed)
 - Assemble values:
 - for paths: from bot to top or vice versa;
 - for values: use last or first value.
 - Replace internal variables tagged with brackets [] by Java system variables (-D), <Setvar> variables, environment variables or system environment variables.
 - Replacing file separators / or \ and path separators : (UNIX) or ; (WINDOWS) according to the target operation system. To suppress replacement in a substring,

enclose characters in grave accents (`). For example, this is required to suppress replacing `c : \` by `c ; \`.

○ Write to file. Empty variables, whose value is an empty string, are not written to the file.

- Assembling script:

- Get last script command from list: If a command line has a leading @ character, the command line will be added to the preceding command line.

- Add optional `-direnv` and `-env` parameters.

- Add optional additional command line arguments.

- Delete User Settings in `CATUserSettingPath` paths

- Add options (menu) to `cmdline`

- Replace internal variables tagged with brackets [] by Java system variables(-D).

- Replacing the file separators / \ and path separators : ; according to the target operation system; for DOS target system ; \ will be re-replaced to : \ .

- Start script.

- Closing *myPLM* (if for the selected node the close attribute is not 'false').

The order of collecting the data from `CATReferenceSettingPath` is then:

- Default from Variable node in XML file

- Value from selected radio button

- from root node to selected node

- from environments files `CATReferenceSettingPath` variable

- from set-attribute

top means: in the collecting order, first is default

bot means: order reversed to the collecting order order, last is default

7. XML File Structure

XML *Transcat* root node has the following subnodes:

- `Environments` (the treeview)
- `Links` (copy of branches)
- `GlobalRadios` (license selection)
- `Groups` (user/host access of treenodes)
- `Variables` (environment variables)
- `Tools` (menu entries)
- `Options` (optional functions e.g. -admin)
- `GUITexts` (text/titles of user interface)
- `Include` (splitted XML files).

These nodes and subnodes will be described in the following.

7.1 Node: <Environments>— Definition of Environment Tree Nodes

<Environments> nodes consist of one or more <Environment> subnodes.



NOTE

At least one environment tree node must be defined.

Attribute name	Description	Value types	Default	Required?
envname	Name of created environment file without ext.	string	–	No
direnv	Directory of created environment file	string	–	No
storeaddon	Attribute to define whether the state of the add-on is memorized at next call or not.	true false	false	No
storeradio	Attribute to define whether the state of the radios is memorized at next call or not.	true false	true	No
lookandfeel	Set look and feel (Windows, Metal, CDE/Motif)	string	system look and feel	No
titletree	Deprcated. Displayed header in tree	string	"Application to Start"	No
titlecheck	Deprcated. Displayed header in add-ons	string	"Additional Software"	No
titleradio	Deprcated. Displayed header in radios	string	"License Configurations"	No
titlebutton	Deprcated. Displayed text on start button	string	"Start"	No
tickertext	URL, filename or text for ticker text	string	–	No
tickerback	URL, filename or text for alternate ticker text. The alternate ticker text is used if the filename or URL specified in tickertext is not available.	String	–	No
tickersleep	Pausing time between paragraphs [msec] <0 News ticker is paused at start. Clicking in the ticker box starts scrolling.	string	2000	No

7. XML FILE STRUCTURE

Attribute name	Description	Value types	Default	Required?
	=0 News ticker is paused at start. After each clicking the ticker scrolls to the next paragraph. >0 News ticker starts with myPLM start.			
tickerspeed	Time interval for scrolling 1 pixel row [msec]	string	40	No
tickericon	User-defined news ticker icon (*.jpg or *.gif)	string	TRANSCAT PLM cat 	No
readtime	Pausing time before rereading ticker text [sec]	string	10	No
fontname	Font for tree text and for text for radio and check buttons	string	system text font	No
fontsize	Font size for tree text and for text for radio and check buttons	string	system text font size	No
fonttype	Font type for tree text and for text for radio and check buttons	bold italic plain	system text font type	No
colbackselect	RGB color for background selected	string	000,000,000	No
colbacknonsel	RGB color for background not selected	string	255,255,255	No
colforeselect	RGB color for foreground selected	string	255,255,25	No
colforenonsel	RGB color for foreground not selected	string	000,000,000	No
notclogo	Attribute to define whether the TRANSCAT PLM logo is displayed at the bottom of the myPLM window or not.	true false	false	No
nomyplmlogo	Attribute to define whether the myPLM logo is displayed at the bottom of the myPLM window or not.	true false	false	No
tooltipexpsel	Deprcated. Tooltip text.	string	"Expand selected"	No
tooltipcolsel	Deprcated. Tooltip text.	string	"Collapse selected"	No
tooltipexpall	Deprcated. Tooltip text.	string	"Expand all"	No
tooltipcolall	Deprcated. Tooltip text.	string	"Collapse all"	No
tooltiphlpref	Deprcated. Tooltip text.	string	"Help Reference"	No
titlemenufile	Deprcated. Menu text.	string	"File"	No
titlemenuexit	Deprcated. Menu text.	string	"Exit"	No
titlemenuopts	Deprcated. Menu text.	string	"Options"	No
titlemenubcks	Deprcated. Menu text.	string	"Backup User Settings"	No

7. XML FILE STRUCTURE

Attribute name	Description	Value types	Default	Required?
titlemenudels	Deprcated. Menu text.	string	"Delete User Settings"	No
titlemenursts	Deprcated. Menu text.	string	"Restore User Settings"	No
titlemenutool	Deprcated. Menu text.	string	"Tools"	No
titlemenuhelp	Deprcated. Menu text.	string	"Help"	No
titlemenuhlpr	Deprcated. Menu text.	string	"Reference"	No
titlemenuhlpt	Deprcated. Menu text.	string	"Tutorial"	No
titlemenuhlpa	Deprcated. Menu text.	string	"About myPLM"	No
msgtext	File/URL to a text or text itsself.	string		No
useretmask	File pattern for user settings operations with wildcards.	string	"*.CATSettings"	No
txtuseretnothing	Deprcated. Text user settings dialog.	string	"Nothing to do for"	No
txtuseretbackup	Deprcated. Text user settings dialog.	string	"Select directory to backup"	No
txtuseretbckerr	Deprcated. Text user settings dialog.	string	"Not all files are backed-up"	No
txtuseretdelete	Deprcated. Text user settings dialog.	string	"files"	No
txtuseretdelerr	Deprcated. Text user settings dialog.	string	"Not all files are deleted"	No
txtuseretrestore	Deprcated. Text user settings dialog.	string	"Select directory to restore"	No
txtuseretresterr	Deprcated. Text user settings dialog.	string	"Not all files are restored"	No
txtuseretconfirm	Deprcated. Text user settings dialog.	string	"to"	No
txtuseretconfdel	Deprcated. Text user settings dialog.	string	"from"	No
txtuseretselect	Deprcated. Text user settings dialog.	string	"Select"	No
titlemodebcks	Deprcated. Text user settings dialog.	string	"Backup"	No
titlemodedels	Deprcated. Text user settings dialog.	string	"Delete"	No
titlemodersts	Deprcated. Text user settings dialog.	string	"Restore"	No
graystartwait	Start button refresh time in seconds	string	2	No
graystartblock	Start button refresh time in seconds for the first refresh cycle only	string	Value of graystartwait	No

Attribute name	Description	Value types	Default	Required?
rereadtime	This triggers a reread of the admin.xml by a time amount. Positive values are in hours, negative values are milliseconds (for testing). A reread menu entry is added to the file menu for manual reread.	string	-	No
nomyplmenvcomments	If set to 'true', myPLM writes a additional Catia environment file named <envname>.nocmt.txt in the same folder as specified for normal environment file. If attribute 'envpar' is set to 'true', the name of the additional file is added to the script instead of the normal file (Issue from Dassault Systemes: Changing the header comments in the Catia environment file may lead to unpredictable situations).	true false	false	No

Subnode: <Environment>—**Definition of Environments, Access, Startable Script, Parameter**

An <Environment> subnode can contain any number (0, 1 or more) of <Environment>, <Setvar>, <Setenvvar>, <Link>, and <Include> subnodes.

Attribute name	Description	Value types	Default	Required?
name	Tree node name	string	–	Yes
icon	Path and name of icon for node	string	–	Yes
user	User-/Group-names separated by ';' and signed by '+' (allow) or '-' (deny). No attribute value: allow all. If username variable starts with '~', this name is not case sensitive. You can use wildcards in the user or group name: * is a placeholder for 0, 1, or any number of characters. ? is a placeholder for 1 character.	string	all	No
host	Host-/Group-names separated by ';' and signed by '+' (allow) or '-' (deny). No attribute value: allow all. If hostname variable starts with '~', this host is not case sensitive. You can use wildcards in the user or group name: * is a placeholder for 0, 1, or any number of characters. ? is a placeholder for one character.	string	all	No
script	Command line (executable, arguments) If the attribute value starts with '@', the entire string after the '@' is appended to the preceding command line. If the attribute starts with '#', all environment variables are set in the session before starting the script. The environment variables are written to the environment file in any case.	string	–	No
scriptpar	Flag, which defines whether additional arguments received by myPLM are forwarded to the script or not.	true false	false	No

Attribute name	Description	Value types	Default	Required?
test	<p>If the specified file is not readable, node will be hidden. More than one file can be combined by the '&&'-AND and the ' '-OR command or can be negated by a '!' command.</p> <p>New: extended test attribute. Full backward compatibility. Logical operators between terms: "&&" - and, " " - or, "!" - not.</p> <p>Terms may be:</p> <p>f{file} or file - test, if readable. u{user/group list} - user test (same as user attr.). h{host/group list} - host test (same as host attr.). v{varname <oper> varvalue} - value test: "=", "<>". i{varname <oper> intvalue} - int. test: "=", ">", "<=", "<>", ">", "<".</p>	string	–	No
env	Environment file(s) separator (';' or ':')	string	–	No
lastenv	Path and filename of one or more environment files. Values from these files are added at the end of the respective environment variables.	string	–	No
envpar	If envpar has the attribute value true, to the command line will be added '-env ...' –and '-direnv ...'.	true false	true	No
set	Additional setting path(s) for CATReferenceSettingPath	string	–	No
close	Close myPLM after application start. If the add-on is activated, the close attribute will not be taken in account.	true false	true	No
addon	<p>This attribute defines, depending on the attribute value, the node as add-on node.</p> <p>If the name of an add-on node starts with '---', a divider will be displayed instead of this node.</p> <p>check: add-on check box, not selected checked: add-on check box, selected radio: radio button fixed: add-on check box is permanently selected fix: add-on check box is permanently deselected hidden: add-on check box is selected and not visible false or no value: the node is no add-on node</p>	check checked radio fixed fix hidden false	false	No
denystart	Disable start button for this environment.	true false	false	No

Attribute name	Description	Value types	Default	Required?
adminstart	Override the denystart="true" setting by user or group entry to enable this to be started by e.g. the admins group.	string	-	No
graystart	Disable dynamically the start button, if the specified file exists. The refresh time is specified by attributes graystartblock and graystartwait of the Environments element.	string	-	No
batchnode	If true, this node is only in batch mode accessible.	true false	-	No
contextmenu	If not specified or "CATIA" is specified, the context menu contains the handling of Catia UserSettings, as before. All other values are used as title for a user specific context menu (see context)	string	CATIA	No
context	If set to "true", this Environment is used as entry in a user specified context menu. This entry is inherited to all children of the parent node. If this entry is selected, the 'script'-value will be executed. myPLM variables [] can be used.	true false	false	No
display	The value of this node is used as name of a node, only for displaying the text. Referenced is this node by name attribute	string	-	No
filter	Default value for the live filter in add-ons shuttle	string	-	No

Subnode: <Setvar>—**Set the specified internal variable at runtime**

An <Setvar> subnode contains a myPLM internal variable and a value which will be set.

Attribute name	Description	Value types	Default	Required?
name	Name of internal variable	string	–	Yes
value	New value for the specified internal variable	string	–	Yes

Subnode: <Setenvvar>—**Set the specified internal environment variable at runtime**

An <Setenvvar> subnode contains a myPLM internal environment variable and a value which will be set.

Attribute name	Description	Value types	Default	Required?
name	Name of internal environment variable	string	–	Yes
value	New value for the specified internal environment variable	string	–	Yes

Subnode: <Language>—**Set the specified internal variable at runtime**

Attribute name	Description	Value types	Default	Required?
name	Name of internal variable	string	–	Yes
value	New value for the specified internal variable	string	–	Yes

Subnode: <Link>— Reference to a branch from Links section

An <Link> subnode contains nothing in <Environment> context and may contain any number (0, 1 or more) of <Environment>, <Setvar>, <Setenvvar>, <Link>, and <Include> subnodes in <Links> context.

Attribute name	Description	Value types	Default	Required?
name	Name of internal variable	string	–	Yes
value	New value for the specified internal variable	string	–	Yes
promote	If the value is "true" and the referenced <Link> node has also the attribute promote="true", the referenced link is promoted to siblings and child nodes. See below for more information on promotion of links.	true or false	false	No

Promotion of links

Links can be promoted to their sibling and child nodes. To promote links, the promote attribute value must be true for both the <Link> node and its referenced <Link> node.

Below is an example.

Example:

Assume the following structure with links in configuration file:

This is the equivalent structure without links.

Link L1 will be promoted to its sibling E12 and to child E123. Link L2 will be not be promoted.

```
<Environments>
  <Environment name="E1" ... >
    <Link name="L1" promote="true"/>
    <Environment name="E12" ... >
      <Environment name="E123" ... />
    </Environment>
  <Environment name="E2" ... >
    <Link name="L2"/>
    <Environment name="E22" ... >
      <Environment name="E223" ... />
    </Environment>
</Environments>
...
<Links>
  <Link name="L1" promote="true">
    <Environment name="A" addon="radio"/>
  </Link>
  <Link name="L2" promote="true">
    <Environment name="B" addon="radio"/>
  </Link>
</Links>
```

```
<Environments>
  <Environment name="E1" ... >
    <Environment name="A" addon="radio"/>
    <Environment name="E12" ... >
      <Environment name="A" addon="radio"/>
      <Environment name="E123" ... >
        <Environment name="A" addon="radio"/>
      </Environment>
    </Environment>
  <Environment name="E2" ... >
    <Environment name="B" addon="radio"/>
    <Environment name="E22" ... >
      <Environment name="E223" ... />
    </Environment>
</Environments>
...
```

Subnode: <Include>— Reference to a exported part of the XML file

An <Include> subnode consists of its name, defining a file or a URL to the exported part.

Attribute name	Description	Value types	Default	Required?
name	File/URL of the XML part	string	–	Yes

7.2 Node: <Links>— Definition of multiple usage branches in Environment nodes

<Links> nodes consist of one or more <Link> or <Include> subnodes.

Example:

```
<Links>
  <Link name="Addons">
    <Environment ...>
    <Environment ...>
  </Link>
  <Link name="Link1">
    <Environment ...>
    <Environment ...>
    <Link name="Addons" ...>
</ Links >
```

Subnode: <Link>

An <Link> subnode contains nothing in <Environment> context and may contain any number (0, 1 or more) of <Environment>, <Setvar>, <Link>, and <Include> subnodes in <Links> context.

Attribute name	Description	Value types	Default	Required?
name	Name of link (part of a tree, recursion allowed)	string	–	Yes
promote	If the value is <code>true</code> , the link node can be promoted to sibling and child nodes of the link reference. To promote the link node, the link reference also requires the attribute <code>promote="true"</code> .	true or false		

7.3 Node: <GlobalRadios>— Buttons to Define Settings for License Configuration

<GlobalRadios> nodes consist of one or more <GlobalRadio> or <Include> subnodes.

Example:

```
<GlobalRadios>
  <GlobalRadio name="MD2" />
  <GlobalRadio name="HD2" />
</GlobalRadios>
```

Attribute name	Description	Value types	Default	Required?
startable	When the attribute value is true, double-click a <GlobalRadio> button to run the command specified in the script attribute. In this case, global radio buttons have no other function.	true, false	false	no

Subnode: <GlobalRadio>

<GlobalRadio> nodes consist of one or more <Setvar> subnodes.

Attribute name	Description	Value types	Default	Required?
name	Name of button	string	–	Yes
icon	Path and name of icon for node	string	–	Yes
set	Additional setting path(s) for CATReferenceSettingPath	string	–	No

Attribute name	Description	Value types	Default	Required?
user	User-/Group-names separated by ';' and signed by '+' (allow) or '-' (deny). No attribute value: allow all. If username variable starts with '~', this name is not case sensitive.	string	all	No
host	Host-/Group-names separated by ';' and signed by '+' (allow) or '-' (deny). No attribute value: allow all. If hostname variable starts with '~', this host is not case sensitive.	string	all	No
script	command line (executable, arguments), a command line with leading '@' will be added to the preceding command line.	string	–	No
test	If the specified file is not readable, node will be hidden. More then one file can be combined by the '&&'-AND and the ' '-OR command or can be negated by a '!' command.	string	–	No

7.4 Node: <Groups>— Definition of Access Conditions

<Groups> nodes consist of one or more <Group> or <Include> subnodes.

Example:

```
<Groups>
  <Group name="Group01">
    <User name="obelix" />
    <User name="asterix" />
  </Group>
  <Group name="Group02">
    <User name="Santana" />
    <Host name="pccad01" />
    <Host name="pccad02" />
  </Group>
  <Group name="Group03">
    <Host name="pccalc01" />
  </Group>
  ...
</Groups>
```

Subnode: <Group>

<Groups> nodes consist of one or more <Group> subnodes. <Group> subnodes contain any number (0, 1 or more) of <User> and <Host> subnodes.

Sub-node	Attribute name	Description	Value types	Default	Required?
Group	name	Group name	string	–	No
User	name	User name. You can use wildcards in the user name attribute: * is a placeholder for 0, 1, or any number of characters. ? is a placeholder for 1 character.	string	–	No
Host	name	Host name. You can use wildcards in the host name attribute: * is a placeholder for 0, 1, or any number of characters. ? is a placeholder for 1 character.	string	–	No

7.5 Node: <Variables>— Definition of Order, Type and Default of Variables

<Variables> nodes consist of one or more <Variable> or <Include> subnodes.

Example:

```
<Variables>
  <Variable name="CATInstallPath" type="path" sort="top" />
  <Variable name="CATDLLPath" type="path" sort="top" />
  ...
</Variables>
```

Subnode: <Variable>

Attribute name	Description	Value types	Default	Required?
name	Variable name	string	–	Yes
type	Path or value for assembling	path value	value	No
keeporder	Multiple-path values from a single environment file are not split	true false	false	No
value	Default value	string	–	No
sort	top (assemble from top to bot) bot (assemble from bot to top)	top bot	top	No

7.6 Node: <Tools>— Definition of Tools (Executables) in the Menu

<Tools> nodes consist of <Tool>, <ToolSubMenu> or <Include> subnodes.

Example:

```
<Tools>
  <ToolSubMenu name="Quality" title="Transcat PLM">
    <Tool name="Q-Monitor" title="Transcat PLM"/>
  </ToolSubMenu>
  <Tool name="Editor" script="notepad.exe"/>
  <Tool name="Rechner" script="calc.exe"/>
  ...
</Tools>
```

Subnode: <Tool>

Attribute name	Description	Value types	Default	Required?
name	Name of tool in menu bar	string	–	Yes
icon	Path and name of icon for node	string	–	Yes
user	User-/Group-names separated by ';' and signed by '+' (allow) or '-' (deny). No attribute value: allow all. If username variable starts with '~', this name is not case sensitive.	string	all	No
host	Host-/Group-names separated by ';' and signed by '+' (allow) or '-' (deny). No attribute value: allow all. If hostname variable starts with '~', this host is not case sensitive.	string	all	No
script	Command line to call the tool	string	–	Yes
test	If the specified file is not readable, node will be hidden. More then one file can be combined by the '&&' -AND and the ' ' -OR command or can be negated by a '!' command.	string	-	No
title	Title of the menu/sub-menu, where this item is located.	string	"Tools"	No

<ToolSubMenu> subnode

The <ToolSubMenu> subnode creates in the menu a sub-menu item. The 'title' attribute of the <Tool> subnode can contain the content of the 'name' attribute of the <ToolSubMenu> subnode.

Attribute name	Description	Value types	Default	Required?
name	Name of submenu, referenced by Items.	string	–	Yes
title	Title of the menu, where this item is located.	string	“Tools”	No

7.7 Node: <Options>– Definition of Additional Options, Accessible from Menu Bar

<Options> nodes consist of one or more <Option> or <Include> subnodes.

```
<Options>
  <Option destination="envfile" name="console" value="CNEXTOUTPUT=console"/>
  ...
</Options>
```

Subnode: <Option>

Attribute name	Description	Value types	Default	Required?
name	Name of option in menu bar	string	–	Yes
user	User-/Group-names separated by ';' and signed by '+' (allow) or '-' (deny). No attribute value: allow all. If username variable starts with '~', this name is not case sensitive.	string	all	No
host	Host-/Group-names separated by ';' and signed by '+' (allow) or '-' (deny). No attribute value: allow all. If hostname variable starts with '~', this host is not case sensitive.	string	all	No
value	Option string	string	–	Yes
destination	Destination: <ul style="list-style-type: none"> cmdline: value string will be added to the command line envfile: value string will be added to the environment file intvar: value will be set at myPLM variable varname. If not checked, varname will be resetted to an empty string. 	cmdline envfile intvar	envfile	No
test	If the specified file is not readable, node will be hidden. More then one file can be combined by the '&&'-AND and the ' '-OR command or can be negated by a '!' command.	string	-	No
varname	Name of myPLM variable to set with value	string	-	No

7. XML FILE STRUCTURE

Attribute name	Description	Value types	Default	Required?
selection	Show file/dir selection box. Result will be set to [SelectionResult] variable. Start directory is the specified path and selectable file types are defined by a wildcard string. A wildcard string without dot results in a dir selection box. ("C:\Temp\t*.ini")	string	-	No

7.8 Node: <GUITexts>—Definition of text and titles displayed in the user interface

<GUITexts> nodes consist of different subnodes (see description). This values will overwrite the values from <Environments> node

```
<GUITexts>
  < titletree name="Application to Start"/>
  ...
</Options>
```

Subnodes: (all are not required and value type is string)

Subnode	Description	Default
titletree	Displayed header in tree	"Application to Start"
titlecheck	Displayed header in add-ons	"Additional Software"
titleradio	Displayed header in radios	"License Configurations"
titlebutton	Displayed text on start button	"Start"
titlemenufile	Menu text.	"File"
titlemenuexit	Menu text.	"Exit"
titlemenureread	Menu text	"Reread XML"
titlemenuopts	Menu text.	"Options"
titlemenutool	Menu text.	"Tools"
titlemenuhelp	Menu text.	"Help"
titlemenuhlpr	Menu text.	"Reference"
titlemenuhlpt	Menu text.	"Tutorial"
titlemenuhlpa	Menu text.	"About myPLM"
tooltipexpsel	Tooltip text.	"Expand selected"
tooltipcolsel	Tooltip text.	"Collapse selected"
tooltipexpall	Tooltip text.	"Expand all"
tooltipcolall	Tooltip text.	"Collapse all"
tooltiphlpref	Tooltip text.	"Help Reference"
titlemenubcks	Menu text.	"Backup User Settings"
titlemenudels	Menu text.	"Delete User Settings"

Subnode	Description	Default
titlemenursts	Menu text.	"Restore User Settings"
titlemodebcks	Text user settings dialog.	"Backup"
titlemodedels	Text user settings dialog.	"Delete"
titlemodersts	Text user settings dialog.	"Restore"
txtuseretnothing	Text user settings dialog.	"Nothing to do for"
txtuseretbackup	Text user settings dialog.	"Select directory to backup"
txtuseretbckerr	Text user settings dialog.	"Not all files are backed-up"
txtuseretdelete	Text user settings dialog.	"files"
txtuseretdelerr	Text user settings dialog.	"Not all files are deleted"
txtuseretrestore	Text user settings dialog.	"Select directory to restore"
txtuseretresterr	Text user settings dialog.	"Not all files are restored"
txtuseretconfirm	Text user settings dialog.	"to"
txtuseretconfdel	Text user settings dialog.	"from"
txtuseretselect	Text user settings dialog.	"Select"
txtclearlist	Addon context menu	"Clear List"
txtradioreset	Radio context menu	"Reset User Settings"
txtforcebaknotextist	Error message DB	"The path set in MYPLM_FORCE_BACKUPPATH does not exist: MYPLM_FORCE_BACKUPPATH="
txterrorfromservice	Error message DB	"Error using service:"
txtradioreseterror	Error message DB	"Error in reset command "
txtdbservicenotavailable	Error message DB	"Service not available:"
txtdbcopyseter1	Error message DB	"Error in command"
txtdbcopyseter2	Error message DB	"Using Settings from Server."
msgmaxrecdepthoverflow	Error message	"Include recursion overflow > 25"
msgerrorparsingxmlfile	Error message	"ERROR parsing XML-File"
msggeneralerrorinmyplm	Error message	"ERROR in myPLM"
msgenvfilenotwritable	Error message	"File not writeable"
msgexceptioninwriteenv	Error message	"Except. writing environment"
msgexceptioninreadenv	Error message	"Except. reading environment"
msgexceptioninreadvar	Error message	"Except. reading variables list"

Subnode	Description	Default
msgerroopenlicensefile	Error message	"Error opening license file, switched to DEMO mode"
msgnovalidlicversion	Error message	"No valid license for version, no start initiated"
msgexcupdatetoollist	Error message	"Except. in updateToolList"
msgvariablenotdefined	Error message	"Variable not defined"
msglinknotfound	Error message	"Link node not found"
msgincludenotfound	Error message	"Include node not found"
msgexcstartexecutable	Error message	"Except. starting executable"
msgunknownexception	Error message	"An unknown exception occured, system may be no more stable"
msgexcactionperformed	Error message	"Except. in actionPerformed"
msgexcstartingscript	Error message	"Except. starting script"
shuttle_window_title	Addon shuttle	"Addon-Shuttle"
shuttle_dialog_title	Addon shuttle	"Select/Deselect Addons"
shuttle_filter_title	Addon shuttle	"Filter"
shuttle_filter_clear	Addon shuttle	"Clear"
shuttle_availa_title	Addon shuttle	"Available"
shuttle_select_title	Addon shuttle	"Selected"
shuttle_availa_buttn	Addon shuttle	"All"
shuttle_select_buttn	Addon shuttle	"All"
shuttle_cancel_buttn	Addon shuttle	"Cancel"
shuttle_accept_buttn	Addon shuttle	"OK"

7.9 Node: <Include>—Reference to a exported part of the XML file

An <Include> subnode consists of its name, defining a file or a URL to the exported part. All items from the XML can be exported and may be unconform to the XML's unique root node rule.

Attribute name	Description	Value types	Default	Required?
name	File/URL of the XML part	string	–	Yes

8. News Ticker File Structure

The news ticker is able to read in text from different sources. To define the source, the 'tickertext' attribute is used (cf. page 20—section 7.1 Node: <Environments>—Definition of Environment Tree Nodes). After the 'tickertext' attribute can follow ...

- an URL → contents are read in from the indicated URL or
- a file name → contents are read in from the indicated file or
- a text → this text will be edited by the news ticker.

In the news ticker the text is scrolled with a speed, defined with the `tickerspeed` attribute. To cause the news ticker pausing after paragraphs, a separator line must be inserted after each paragraph. The `tickersleep` attribute commands how long it will be paused at the end of the paragraphs. With the `readtime` attribute, it can be defined after how much time the news ticker information is to be restarted.

Format of the ticker text:

You can supply content for the news ticker as plain text or with formatting. To separate ticker entries, begin a new line with `
`.

Plain text must use ISO 8859-1 encoding.

```
Hello user
<br>
Today's weather in Karlsruhe: Snow, 0°C
Today's weather in Rome: Cloudy, 14 °C
<br>
Tomorrow's weather in Karlsruhe: Partly cloudy, 6°C
Tomorrow's weather in Rome: Clear, 16°C
```

You can use HTML with CSS to format the news ticker text. The supported set of HTML tags and CSS depends on the Java installation used with myPLM.

The `
` tag cannot be used for a manual line break.

Write the entire HTML code in one line.

```
<html><body><p style="background-color:#FFFF00">Sunshine</p><p style="background-color:#0000FF; color:#FFFFFF">Rain</p></body></html>
<br>
This is unformatted text. You can mix formatted and unformatted text in the ticker.
```

For a comprehensive list, search the Java online documentation at <http://docs.oracle.com> for “HTML.tag” and “CSS.attribute”.

Avoid using images in the news ticker. Images might not be displayed depending on their load time.

News ticker size

The news ticker’s size is defined by the following dimensions:

- width by the myPLM window’s width
 less the width of the company's logo on the right of the news ticker
- height by the height of the company's logo.

Customer news ticker logo

The icon at the left side of the news ticker can be a user own image (gif or jpg-format) in the `tickericon` attribute. To display no icon, use an 1 x 1 pixel sized image.

9. Multi-Language Support

myPLM disposes of hot-switch multi-language support. This means:

- (1) The myPLM GUI can be displayed in different languages.
myPLM is delivered with predefined English and German texts
The user can define texts in additional languages.
- (2) The languages are switched immediately after clicking on the language icons (or on the language menu items), i. e. no restart is needed.

Remark:

At present, myPLM is delivered without prepared language feature. To be able to use multi-language support, thus, the language feature is to be defined by the client. Otherwise myPLM will open without multi-language support only in English (i. e. without multi-language support) according to the settings made in the *Environments* node (see section 7.1 *Node: <Environments>—Definition of Environment Tree Nodes* p. 20).

Description	Example
<p>All GUI texts can have a @ sign as first character. The script that compiles the myPLM GUI will search in this case for <code>Translations</code> nodes containing the variables with the language specific texts. (In our example, we give two GUI texts with leading @ sign: "<code>@titlebutton</code>" and "<code>@tools</code>".)</p> <p>If a GUI text has no leading @ sign, it will be displayed always, irrespectively of the language selected for the GUI.</p>	<pre><Environments colbackselect="255,0,0" direnv="." envname="myPLM" ... titlebutton="@titlebutton" ...> <Environment name="@tools"></pre>
<p>In the new Language section with the attribute <code>name=<varname for language setting></code> for each string with leading @ a <code>Translations</code> node has to be created the attribute name of which is a text string—example: <code>name="anystring"</code> (in our example we give only two <code>Translations</code> nodes).</p> <p>Each <code>Translations</code> node consists of as many <code>Translation</code> nodes as languages are required (our example our example contains two <code>Translation</code> nodes as two languages are defined).</p>	<pre><Language name="lang"> ... <Translations name="titlebutton"> <Translation name="de" text="Starten" /> <Translation name="en" text="Execute" /> </Translations> <Translations name="tools"> <Translation name="de" text="Werkzeuge" /> <Translation name="en" text="Helpers" /> </Translations> </Language></pre>

Description	Example
<p>According to the language variable, the text will be set. There are two ways to state the language variable—see the following two points:</p>	
<p>(1) It is possible to predefine the language preselected when opening myPLM by setting the language variable (for instance, in a *.bat file)—example: -D<var>=<value>.</p>	<pre>java -Dlang=en -classpath myPLMuser_1.2.x.jar myplm.user.MyPLMGui myPLM.xml</pre>
<p>(2) In Tools menu, the script attribute may have a leading '@', then a variable=value pair must follow. At runtime, the variable will be set to value and the GUI texts will be regenerated.</p>	<pre><Tools> <ToolSubMenu name="@Language" title="@Utility"> <Tool icon="en.gif" name="@english" script="@lang=en" title="@Utility" /> <Tool icon="de.gif" name="@deutsch" script="@lang=de" title="@Utility" /> </ToolSubMenu></pre>
<p>Hint: e-news source can be handled in the same way so that the e-news language also can be switched.</p>	<pre>tickertext="@news" <Translations name="news"> <Translation name="de" text="news_de.txt" /> <Translation name="en" text="news_en.txt" /> </Translations></pre>

10. CSIDL Utility for WINDOWS

CSIDL Utility for WINDOWS (file name: `GetCSIDL2.exe`) is a tool that extracts the values for CSIDL variables from the WINDOWS registry.

To hamildendle this values in myPLM, do the following steps:



STEPS:

- (1) Before starting myPLM, start `GetCSIDL2.exe` and redirect the output to a file.
Example: `GetCSIDL2.exe > csidl.txt`
- (2) Start myPLM with the parameters:
`-c -v csidl.txt`
(For parameter explanation see section 5 *Command to Start my p. 12.*)

We recommend to write this command in a myPLM start script.

11. Internal Variables

Default internal variables

Name	Description	Default value
username	User name	unknown
Hostname	Host name	unknown
env	Environment output file	default
direnv	Environment output directory	.
showref	Command to open the reference manual	
showtut	Command to open the tutorial	
browser	Command executed on clicking the bottom-right image in the myPLM window	www.transcat-plm.com (Link to the Transcat PLM website)
params	<p>Parameter string from the command used to start myPLM.</p> <p>Example: Assume the following command to start myPLM:</p> <pre>java -classpath myPLMuser_xx.jar myplm.user.MyPLMGui -d \myPLM.xml .\test.CATPart</pre> <p>This is the value of internal variable params: .\test.CATPart</p>	Empty string
RadioName	Name of the <GlobalRadio> radio button that has been double-clicked most recently.	Empty string
SelectionResult	Return value of the most recently confirmed file selection dialog.	Empty string

Custom internal variables

You can define own internal variables in the <Setvar> node.

* * *